



Ladysmith Road | | Enfield | EN1 3AE

Asking Price £675,000



Key features

- FOUR BEDROOM END TERRACE HOME
- BAY FRONT RECEPTION WITH FEATURE FIREPLACE
- RECEPTION-DINING-KITCHEN ROOM WITH DIRECT ACCESS TO GARDEN
- GROUND FLOOR SHOWER ROOM & FIRST FLOOR FAMILY BATHROOM
- BEAUTIFULLY MAINTAINED REAR GARDEN WITH SIDE ACCESS & STORAGE SHED
- DETACHED GARAGE
- WITHIN EASY REACH OF ENFIELD TOWN CENTRE
- CLOSE TO TRANSPORT & MOTORWAY LINKS
- SCHOOLS FOR ALL AGES & GREEN SPACE NEARBY
- AN IDEAL FAMILY HOME

Description

James Hayward are delighted to offer a charming, four bedroom end terrace home in Ladysmith Road in Enfield. This very appealing property offers a perfect blend of comfort and modern living. Spanning an impressive 1,312 square feet, the property boasts good sized living space, ideal for both relaxation and entertaining, creating a warm and inviting atmosphere throughout.

The heart of the home is the open-plan reception-dining-kitchen area, which provides a seamless flow for family gatherings and social occasions. This contemporary layout ensures that the space is both functional and stylish, catering to the needs of modern family life.

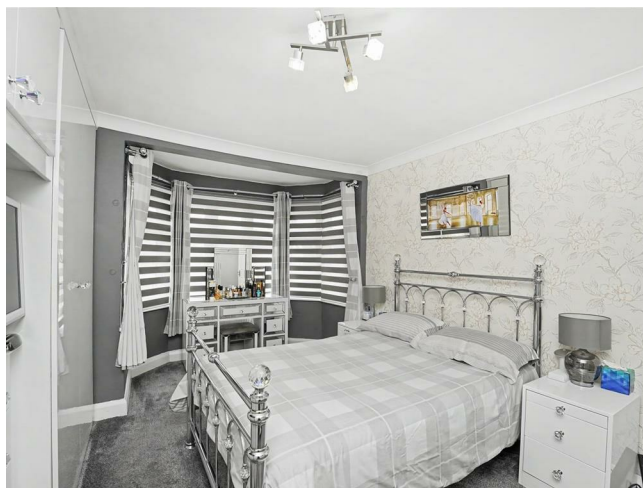
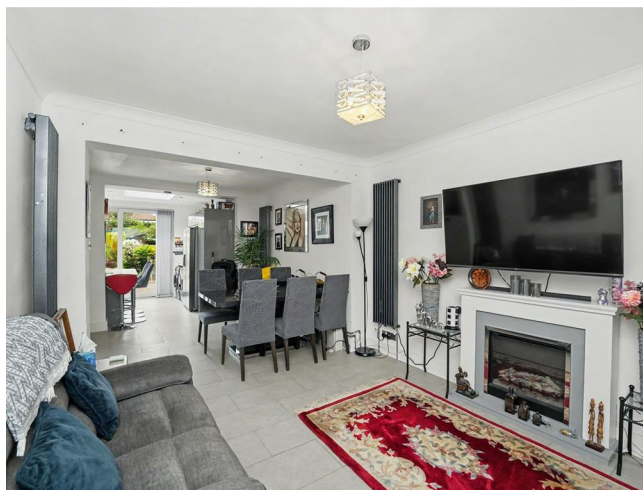
There is an easy maintenance and beautifully maintained garden with side access and shed, complementing the property; an ideal outdoor space for summer barbecues or just relaxing in, with a drink of your choice.

With four well-proportioned bedrooms, there is ample space for family members or guests. The property also includes a ground floor shower room and first floor family bathroom, providing convenience and privacy for all.

For those with vehicles, the home offers off street parking and a detached garage, a valuable feature in this sought-after area.

This property is not just a house; it is a place where memories can be made. With its attractive features and prime location, close to transport/motorway links, schools for all ages, green spaces and local shops, it presents an excellent opportunity for families or individuals seeking a comfortable and spacious home in Enfield.

Directions



Situated in Ladysmith Road in Enfield, a delightful four bedroom end terrace house, with own drive, detached garage and beautifully maintained rear garden with side access and storage space. This delightful home offers good sized living accommodation, including reception-dining-kitchen room and two bathrooms, ensuring convenience all round for family and guests. Enfield Town centre, retail parks, transport/motorway links, schools for all ages and green spaces are all close by. This is a charming family home, in the heart of Enfield and an ideal proposition if looking to move to a vibrant and friendly community.



Floor plans



Ladysmith Road

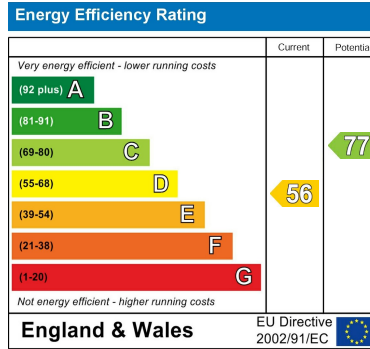
Approximate Gross Internal Floor Area : 121.90 sq m / 1312.12 sq ft

(Excluding Garage & Shed)

Garage Area : 9.70 sq m / 104.40 sq ft

Shed Area : 14.10 sq m / 151.77 sq ft

Illustration for identification purposes only, measurements are approximate, not to scale.



181 Chase Side

Enfield

Greater London

EN2 0PT

020 8367 4000

sales@james-hayward.com

James-Hayward.com